

Drawing



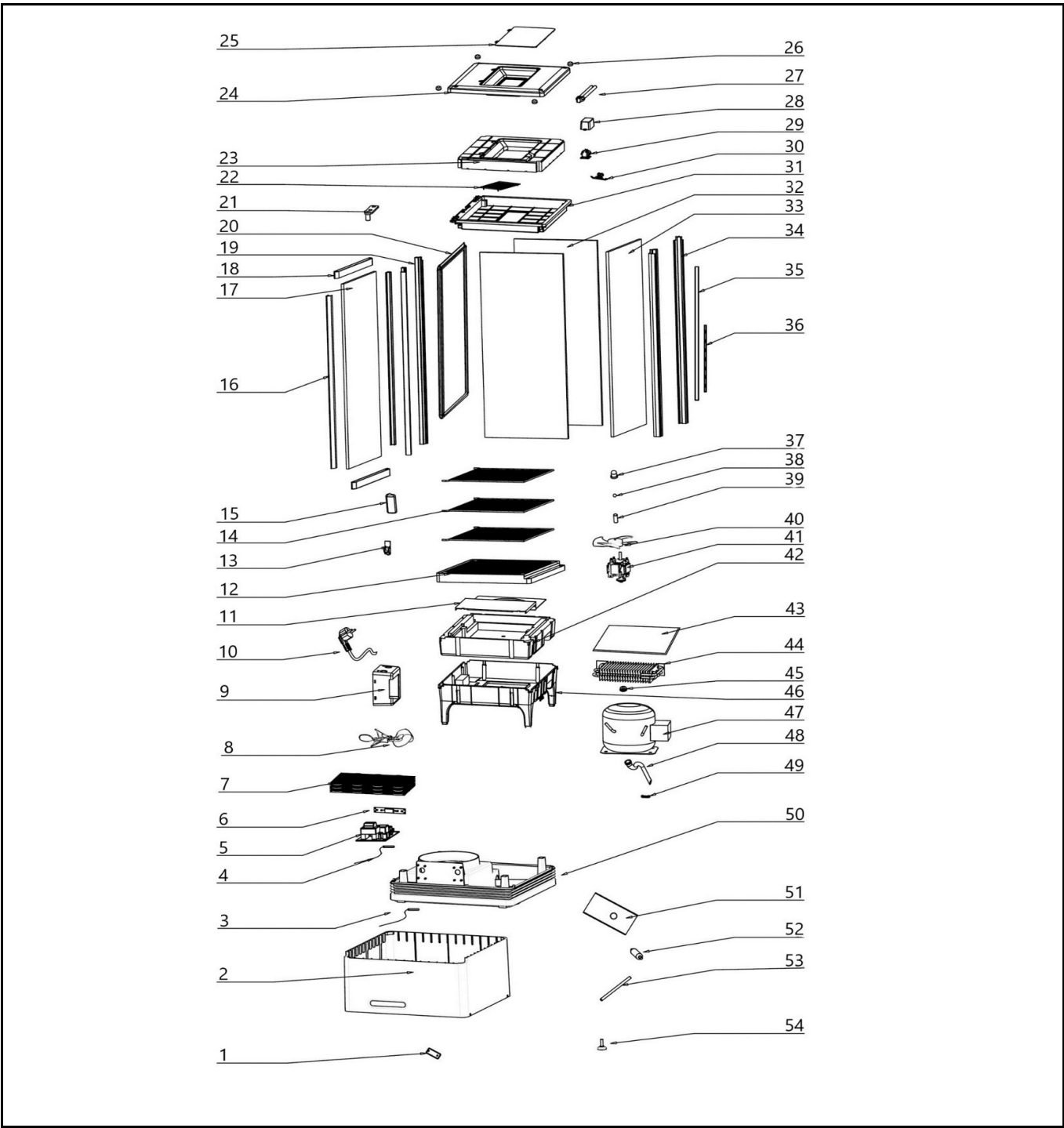
Hendi B.V.
 Steenoven 21
 3911 TX Rhenen
 The Netherlands

Batch #
 170581 until
 HK022221


Appliance part#
233627

Description
 Refrigerated display cabinet 58L Black

| | | | |
|----------|-------------------------------|------------|-----|
| Date | 09-12-2021 | Revision # | 1.0 |
| Revision | First Bill of Materials (BOM) | | |



Bill of materials (BOM)

| | | |
|--|--------------------------|------------------------|
|  <p>Hendi B.V. Steenoven 21 3911 TX Rhenen The Netherlands</p> | Batch # | Appliance part# |
| | 170581 until HK022221 | 233627 |
| | Description | |
| Refrigerated display cabinet 58L Black | | |


| | | | |
|-----------------|-------------------------------|-------------------|-----|
| Date | 09-12-2021 | Revision # | 1.0 |
| Revision | First Bill of Materials (BOM) | | |

| Item | Description | Part# | Quantity | Remark | Picture |
|-------|---------------------------|--------|----------|----------------------------|---------|
| 1 | Feet | n/a | 2 | | |
| 2 | Housing | n/a | 1 | | |
| 3 | Probe (defrost) | 948705 | 1 | | |
| 4 | Probe (temperature) | 948712 | 1 | | |
| 5 | Main PCB | 948729 | 1 | | |
| 6 | Display PCB | 948736 | 1 | | |
| 7 | Condensor | n/a | 1 | | |
| 8 | Condensor fanblade | n/a | 1 | | |
| 9 | Main PCB housing | n/a | 1 | | |
| 10 | Power cord | 948743 | 1 | | |
| 11 | Evaporator bracket | n/a | 1 | | |
| 12 | Ventilation tray | n/a | 1 | | |
| 13 | Shelf holder | 948774 | 4 | | |
| 14 | Shelf | 948781 | 2 | | |
| 15 | Door handle | nss | 1 | | |
| 16 | Door frame (left/right) | nss | 2 | | |
| 17 | Door glass | nss | 1 | | |
| 18 | Door frame (top/bottom) | nss | 2 | | |
| 15~18 | Door complete | 948859 | 1 | | |
| 19 | Conrner pole (front) | n/a | 2 | | |
| 20 | Door gasket | 948873 | 1 | | |
| 21 | Door hinge (top) | n/a | 1 | | |
| 22 | Inner housing panel (top) | n/a | 1 | | |
| 23 | Housing insulation (top) | n/a | 1 | | |
| 24 | Housing panel (top) | n/a | 1 | | |
| 25 | Housing cover (top) | n/a | 1 | | |
| 26 | Screw cover | n/a | 4 | | |
| 27A | Fluorecent lamp 11W | 948798 | 1 | Until batch HK014320 | |
| 27B | LED light | 961810 | 1 | From batch HK033620 and up | |
| 28 | Ballast | 948804 | 1 | | |
| 29 | Lamp fitting | n/a | 1 | | |
| 30 | Lamp bracket | n/a | 1 | | |
| 31 | Defuser | n/a | 1 | | |
| 32 | Glass panel (side) | 948880 | 1 | | |
| 33 | Glass panel (back) | 948897 | 1 | | |
| 34 | Corner pole (back) | n/a | 2 | | |
| 37 | Door hinge bushing | n/a | 1 | | |
| 38 | Steel ball for door hinge | n/a | 1 | | |
| 39 | Pin for door hinge | n/a | 1 | | |
| 40 | Evaporator fanblade | n/a | 1 | | |
| 41 | Fan motor | 948811 | 1 | | |
| 42 | Evaporator insulation | n/a | 1 | | |
| 43 | Evaporator cover | n/a | 1 | | |
| 44 | Evaporator | n/a | 1 | | |
| 45 | Fan mount ring | n/a | 1 | | |
| 46 | Evaporator bracket | n/a | 1 | | |
| 47 | Compressor | 948828 | 1 | (HVM10AA) | |
| 48 | Drain pipe | n/a | 1 | | |
| 50 | Housing base | n/a | 1 | | |
| 51 | Fan motor bracket | n/a | 1 | | |
| 52 | Dryer filter | n/a | 1 | | |
| 53 | Coolant tube | n/a | 1 | | |
| 54 | Feet (adjustable) | 948835 | 2 | | |

n/a -> not available

nss -> not sold separately

Wiring diagram

| | | |
|--|--|------------------------|
|  <b style="font-size: 2em; margin-left: 10px;">HENDI Tools for Chefs Hendi B.V. Steenoven 21 3911 TX Rhenen The Netherlands | Batch # | Appliance part# |
| | 170581 until HK022221 | 233627 |
| | Description | |
| | Refrigerated display cabinet 58L Black | |

| | | | |
|-----------------|-------------------------------|-------------------|-----|
| Date | 09-12-2021 | Revision # | 1.0 |
| Revision | First Bill of Materials (BOM) | | |

